

2026 WTCS Yokohama

"Family FUN Run" Implementation Plan

Draft 2: May 14, 2026

Course

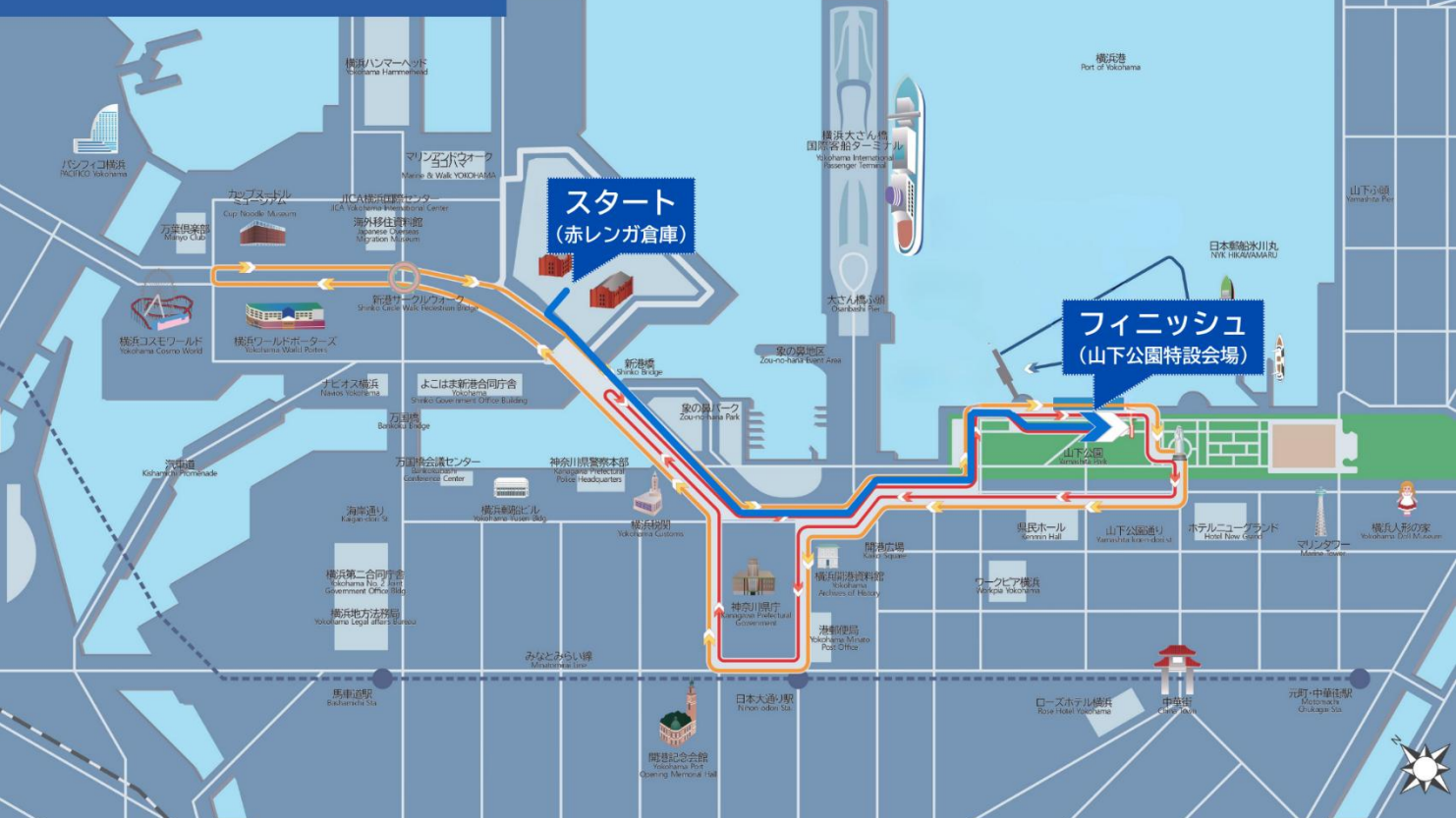


2026 World Triathlon Championship Series Yokohama

Elite Course Map

Elite
Swim: 1.5 km (0.75 km x 2 Laps)
Bike: 40 km (4.0 km x 10 Laps)
Run: 10 km (2.5 km x 4 Laps)

Course
 Swim Course
 Bike Course
 Run Course

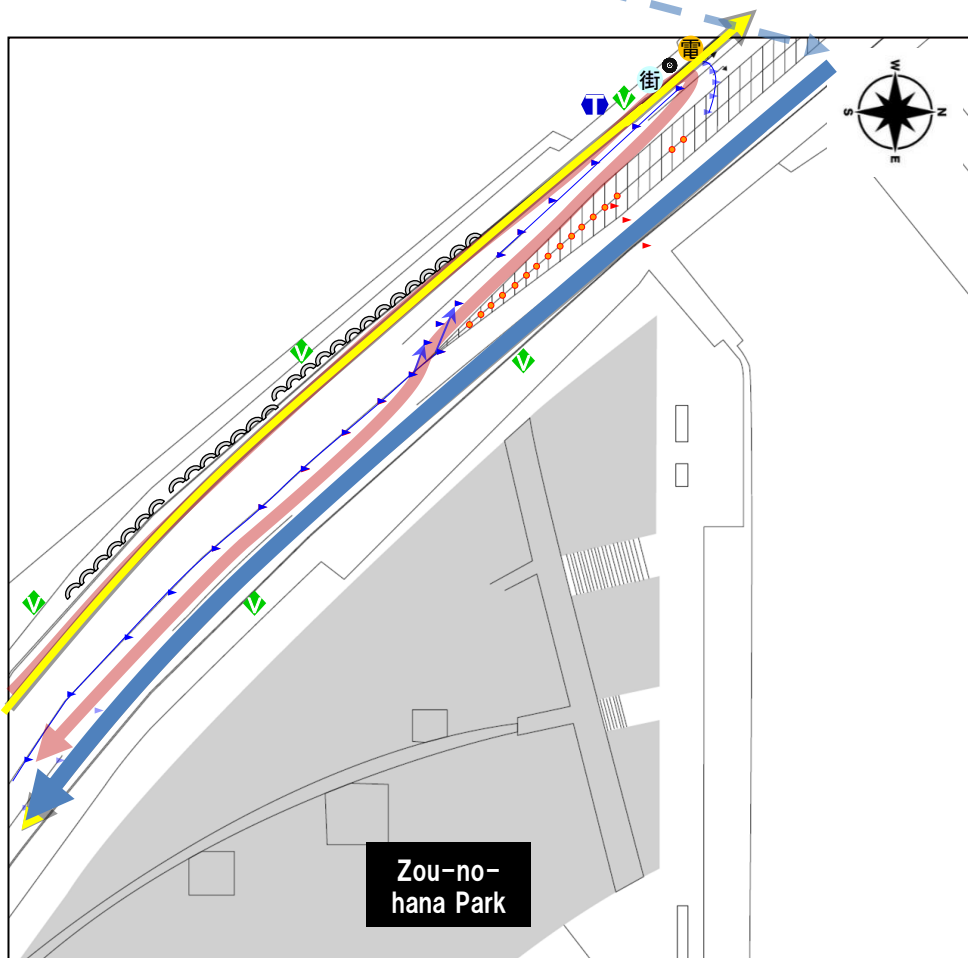
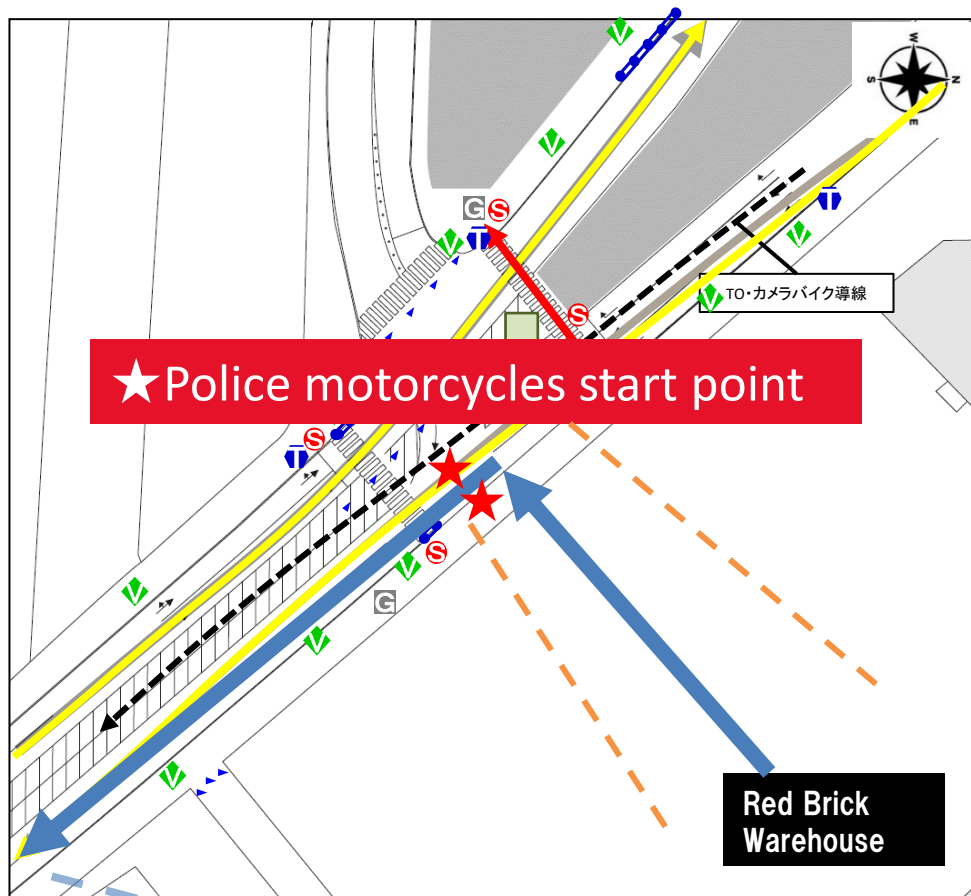


Time Schedule

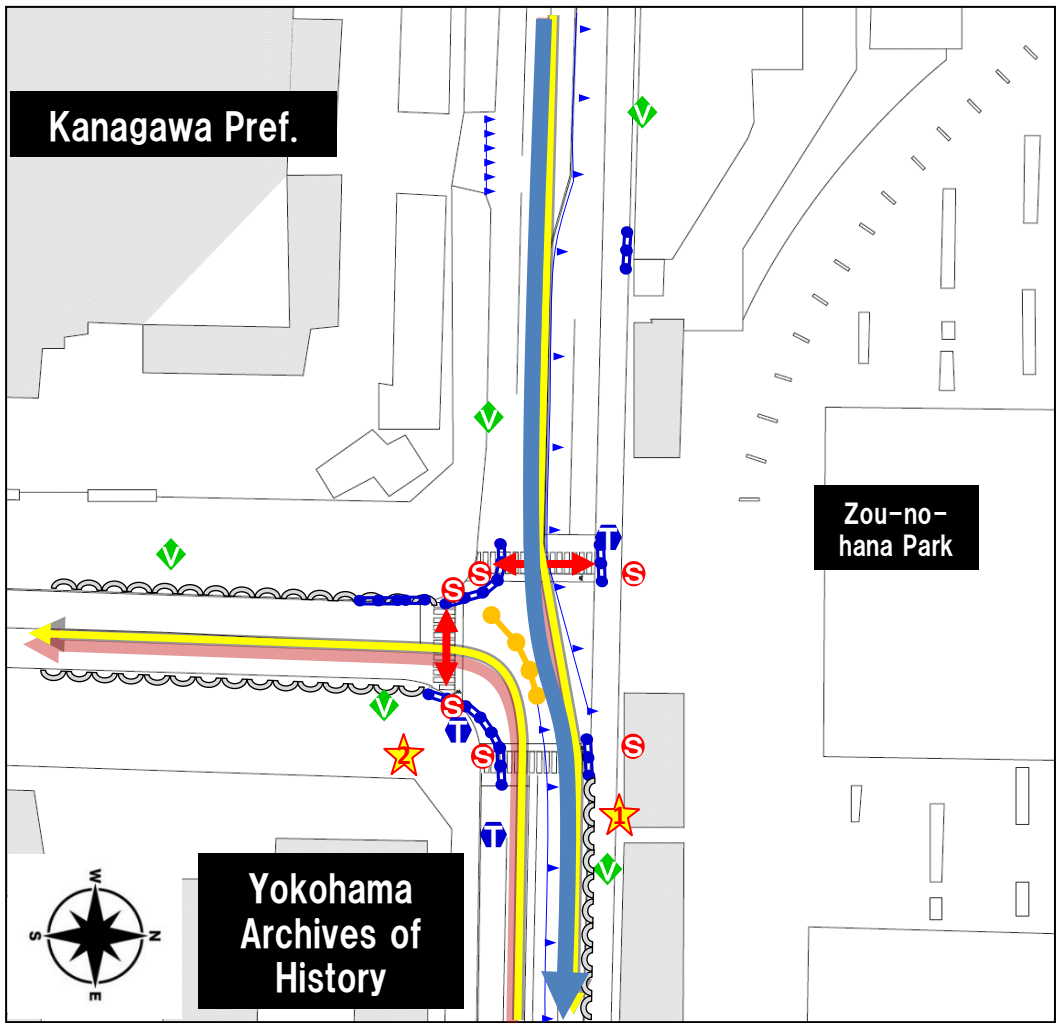
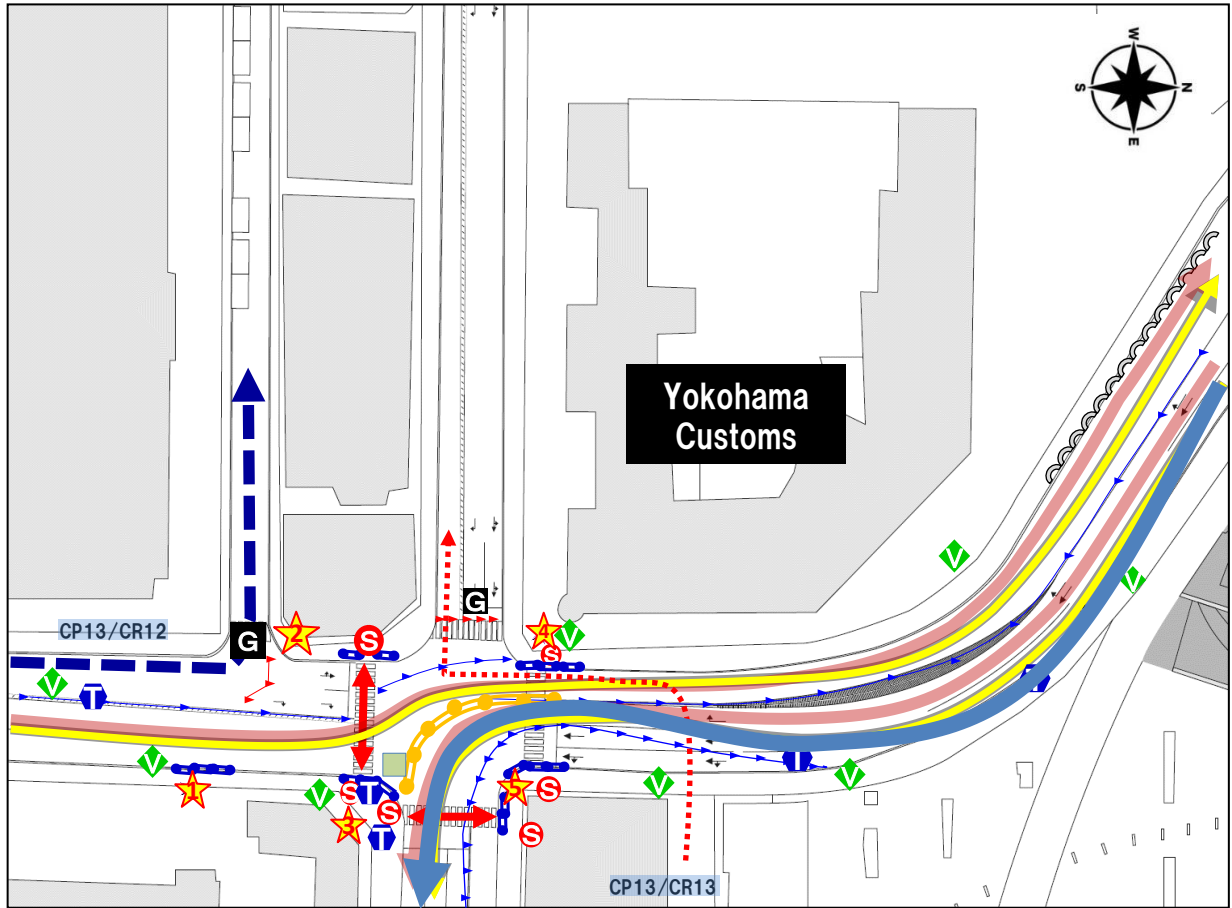
- 9:00 - Registration opens @ Red Brick Warehouse Plaza
- 10:00–11:10 - Running Clinic
- 11:25–11:55 - Band Performance
- 11:55–12:05 - Line-up
- **12:11 - Elite Women's last runner turnaround**
- **12:15 - FUN Run Start @ Red Brick Warehouse**
- **12:23 - First runner finishes @ Yamashita Park**
- **12:25 - Cut-off @ Kaiko Plaza**
- **12:29 - Last runner finishes**
- **12:30 - Course clear**

Detailed Course Map [CP16 → CP15]

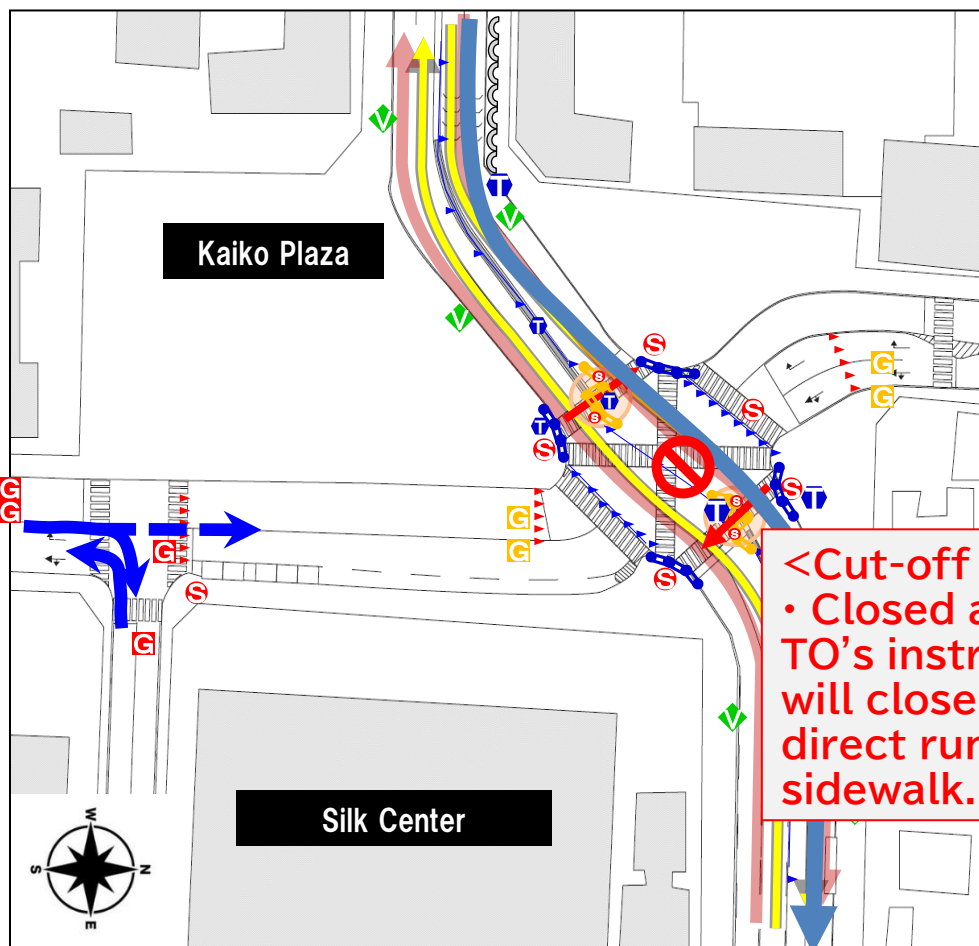
Flow line



Detailed Course Map [CP13 → CP10]

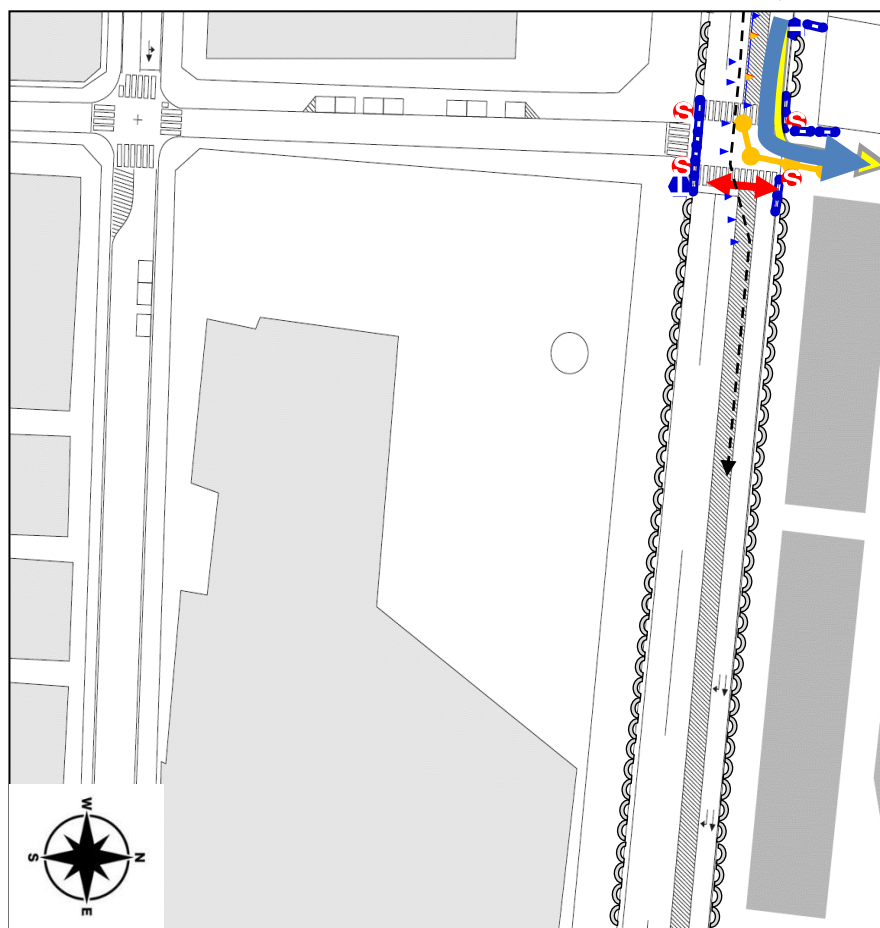


Detailed Course Map [CP8 → CP6]



Flow line

<Cut-off Point>
• Closed at 12:25. Following TO's instructions, marshals will close the course and direct runners onto the sidewalk.



Finish Area



- Around 12:15: Elite women's last runner finishes
→ Open metal barriers for finish flow line
- Around 12:20: Guides take positions
- Around 12:23: As runners finish, guide them sequentially in arrow direction